

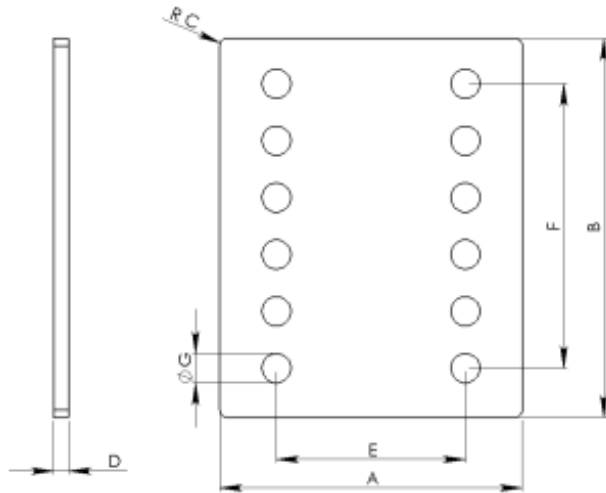


**Coining** Technologies  
INCORPORATED

Open Tool Catalog  
Base Plates

Phone +1.973.253.0500 • Fax +1.973.253.9611 • e-mail [sales@coining.com](mailto:sales@coining.com)  
[www.coining.com](http://www.coining.com)

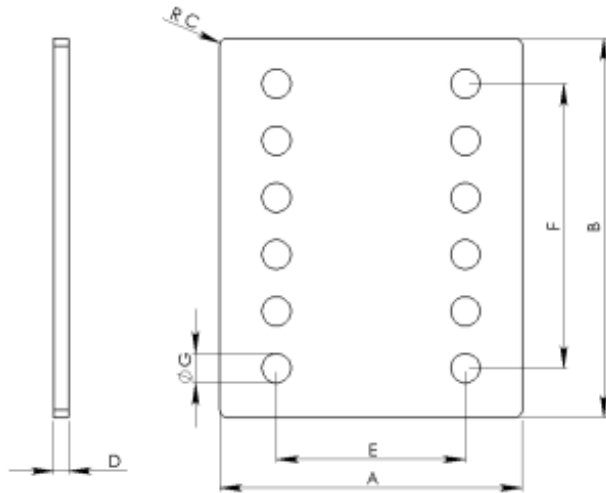
Rev. A-113007



400 Kuller Road  
 Clifton, NJ 07011  
 Phone: 973.253.0500  
 Fax: 973.253.9611  
 Web: www.coining.com  
 E-mail: sales@coining.com

## BP • Flat or Coined Base Plates

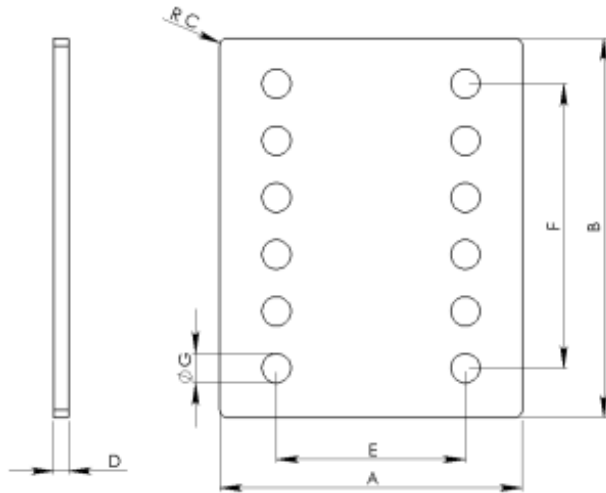
CTI Part#	A	B	C	D	E	F	G	Comments
Overall Width	Overall Length	Radius	Thickness	Hole Grid Width	Hole Grid Length	Hole Diameter		
BP-496	0.118	0.531	0.059	0.060	0.416	none	.041	
BP-496-01A	0.118	0.531	0.059	0.059	0.413	none	0.041	
BP-174-01K	0.198	0.460	N/A	0.015	0.270	none	0.070	
BP-554	0.202	0.473	0.030	0.040	0.350	none	.050 & .028	
BP-554-01B	0.202	0.473	0.035	0.045	0.100	0.3	.022/.063	
BP-554-03B	0.202	0.473	0.035	0.045	0.300	none	[1] 0.050 / [3] 0.063	
BP-554-05B	0.202	0.473	0.035	0.045	0.100	0.3	[4] 0.050/[4] 0.063	
BP-216-15B	0.212	0.482	0.018	0.048	0.100	0.3	??	
BP-787-01G	0.236	0.787	0.077	0.079	0.581	none	0.063/0.138	
BP-459-01K	0.250	0.459	0.030	0.015	N/A	N/A	N/A	
BP-215-22B	0.360	0.764	0.040	0.078	0.200	0.6	0.1060	
BP-215-678	0.361	0.765	0.035	0.060	0.200	0.6	0.106	
BP-215-04B	0.362	0.765	0.035	0.045	0.200	0.6	.106	
BP-215-05B	0.369	0.774	0.038	0.060	0.200	0.6	.116/.031	
BP-215-07B	0.369	0.774	0.038	0.060	0.200	0.6	.116	
BP-215-80B	0.369	0.774	0.038	0.060	0.200	0.6	.116/.031	
BP-215-08B	0.374	0.774	0.030	0.060	0.200	0.6	.093	
BP-215-20B	0.374	0.774	0.019	0.059	0.200	0.6	0.094	
BP-376-01A	0.375	0.375	0.025	0.010	N/A	N/A	N/A	
BP-215-90B	0.380	0.790	0.030	0.060	0.200	0.6	.100	
BP-215-10B	0.382	0.792	0.030	0.060	0.200	0.6	.106	
BP-215-01B	0.383	0.783	0.035	0.060	0.200	0.6	.093	
BP-215-02B	0.383	0.783	0.035	0.060	0.200	0.6	.093 & .118	
BP-215-06B	0.383	0.783	0.035	0.060	0.200	0.6	.075	
BP-215-12B	0.383	0.783	0.035	0.060	0.200	0.6	.106	
BP-215-13B	0.383	0.783	0.035	0.060	0.200	0.6	.106 & .128	
BP-215-15B	0.383	0.783	0.035	0.060	0.100	0.6	.075	
BP-215-16B	0.383	0.783	0.035	0.060	0.200	0.6	.075	
BP-215-12B	0.383	0.783	0.035	0.060	0.200	0.6	0.106	
BP-215-13B	0.383	0.783	0.035	0.060	0.200	0.6	[2]0.106/[3]0.128	



400 Kuller Road  
 Clifton, NJ 07011  
 Phone: 973.253.0500  
 Fax: 973.253.9611  
 Web: www.coining.com  
 E-mail: sales@coining.com

## BP • Flat or Coined Base Plates

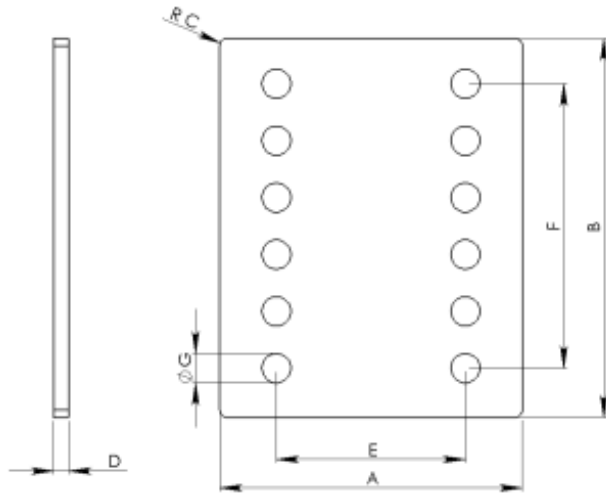
CTI Part#	A	B	C	D	E	F	G	Comments
	Overall Width	Overall Length	Radius	Thickness	Hole Grid Width	Hole Grid Length	Hole Diameter	
BP-215-16B	0.383	0.783	0.035	0.060	0.200	0.6	0.075	
BP-024-01A	0.394	1.634	0.059	0.059	0.275	none	0.122	
BP-004-01G	0.400	0.900	0.010	0.025	0.500	none	0.062	
BP-004-02G	0.400	0.900	0.010	0.025	0.500	none	0.087	
BP-005-03K	0.413	0.649	0.035	0.040	N/A	N/A	0.142	
BP-415-01C	0.415	0.415	0.060	0.020	N/A	N/A	N/A	
BP-415-02C	0.415	0.415	0.035	0.020	N/A	N/A	N/A	
BP-415-04K	0.415	0.415	0.060	0.030	none	none		
BP-418-01K	0.415	0.420	0.055	0.040	N/A	N/A	N/A	
BP-005-02K	0.415	0.650	0.055	0.040	N/A	N/A	0.142	
BP-005-04K	0.415	0.650	0.055	0.040	0.118	0.2075	0.145	ONE HOLE.
BP-436	0.465	0.871	0.062	0.060	0.260	0.7	.078	
BP-436-01B	0.465	0.871	0.050	0.060	0.260	0.7	0.078	
BP-215-09B	0.475	0.975	0.015	0.093	0.200	0.6	.161	
BP-215-09B	0.475	0.975	0.015	0.093	0.200	0.6	[2] 0.018 / 0.161	
BP-385-01B	0.476	0.987	0.034	0.125	0.200	0.6	.161	
BP-489-1AB	0.489	2.000	N/A	0.015	0.389	1.75	0.070	
BP-494-1MO	0.494	0.634	0.060	0.018	none	none		
BP-552-01A	0.495	0.815	0.025	0.040	0.300	0.6	0.056	
BP-750-01A	0.498	1.010	0.020	0.020	N/A	N/A	N/A	
BP-092-02A	0.500	0.500	0.090	0.025	N/A	N/A	N/A	
BP-092-02K	0.500	0.500	0.090	0.025	N/A	N/A	N/A	
BP-012-01A	0.500	0.881	0.020	0.060	N/A	N/A	N/A	
BP-026-01A	0.500	1.142		0.039	0.354	none	0.1063	
BP-170-01A	0.500	1.180	0.028	0.059	0.354	1.025	0.098	
BP-170-02A	0.500	1.181	N/A	0.059	0.354	1.024	0.0787	
BP-170-03A	0.500	1.181		0.059	0.354	1.025	0.091	
BP-515-01H	0.515	1.600	0.035	0.020	N/A	N/A	N/A	
BP-150-02K	0.540	0.790	0.060	0.045	N/A	N/A	0.146	
BP-150-01U	0.540	0.795	0.065	0.045	N/A	N/A	0.144	



**400 Kuller Road**  
**Clifton, NJ 07011**  
**Phone: 973.253.0500**  
**Fax: 973.253.9611**  
**Web: www.coining.com**  
**E-mail: sales@coining.com**

## BP • Flat or Coined Base Plates

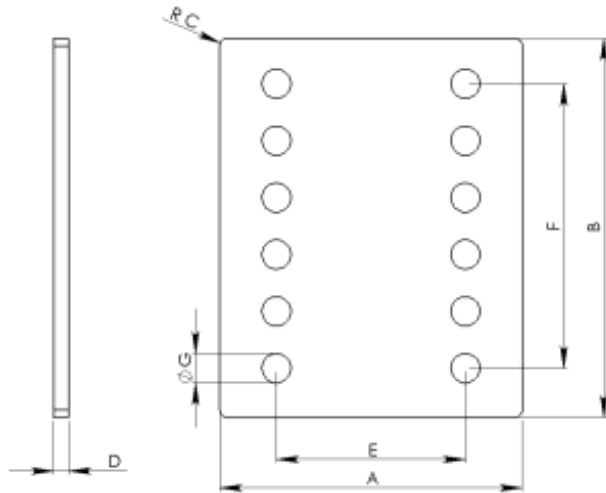
	A	B	C	D	E	F	G	
CTI Part#	Overall Width	Overall Length	Radius	Thickness	Hole Grid Width	Hole Grid Length	Hole Diameter	Comments
BP-180-01A	0.559	1.120	N/A	0.060	0.500	none	0.062/0.090	
BP-155	0.562	0.952	.040	0.078	0.400	0.8	.094	
BP-155-01B	0.562	0.952	0.040	0.078	0.400	0.8	0.094	
BP-760-01A	0.598	1.510	0.020	0.020	N/A	N/A	N/A	
BP-165	0.625	1.150	0.188	0.025	0.950	none	.101	
BP-165-01A	0.625	1.150	0.188	0.025	0.950	none	0.101	
BP-702-01A	0.630	1.960	0.020	0.020	N/A	N/A	N/A	2ND RADIUS IS 0.047 DIA
BP-400-01A	0.645	4.144	0.060	0.050	0.544	1.322		
BP-655-01A	0.655	1.125	0.020	0.010	N/A	N/A	N/A	
BP-022-01A	0.678	0.878	N/A	0.039	0.400	none	0.059/0.019/0.098	
BP-688-01C	0.688	0.824	0.065	0.039	N/A	N/A	0.160	
BP-688-01K	0.688	0.824	0.065	0.039	N/A	N/A	0.160	
BP-688-02K	0.689	0.825	0.060	0.039	N/A	N/A	0.160	
BP-690	0.690	0.820	0.075	0.040	0.118	none	.160	
BP-690-01B	0.690	0.820	0.065	0.040	N/A	N/A	0.160	
BP-690-02K	0.690	0.820	0.075	0.040	0.118	none	0.140	ONE HOLES.
BP-690-01K	0.690	0.870	0.065	0.040	N/A	N/A	0.160	
BP-006-01A	0.714	1.290	0.055	0.020	N/A	N/A	N/A	
BP-145-01K	0.745	1.145	0.060	0.022	N/A	N/A	N/A	
BP-375	0.750	1.375	0.075	0.048	0.118	0.77	.150	
BP-545-01B	0.766	0.766	0.035	0.063	0.600	0.6	.106/.031	
BP-545-02B	0.766	0.766	0.035	0.067	0.600	0.6	.106 & .032	
BP-545-02B	0.766	0.766	0.035	0.067	0.600	0.6	.106/.031	
BP-545-04B	0.766	0.766	0.035	0.067	0.600	0.6	.106 & .032	
BP-545-07B	0.766	0.766	0.035	0.067	0.600	0.6	.106/.032	
BP-545-08B	0.766	0.766	0.035	0.067	0.600	0.6	.106/.032	
BP-545-14B	0.766	0.766	0.035	0.067	0.600	0.6	.106/.032	
BP-545-04B	0.766	0.766	0.035	0.067	0.600	0.6	[10] 0.106	
BP-545-07B	0.766	0.766	0.035	0.067	0.600	0.6	[6] 0.106	
BP-545-08B	0.766	0.766	0.035	0.067	0.600	0.6	[6] 0.106	



400 Kuller Road  
 Clifton, NJ 07011  
 Phone: 973.253.0500  
 Fax: 973.253.9611  
 Web: www.coining.com  
 E-mail: sales@coining.com

## BP • Flat or Coined Base Plates

CTI Part#	A	B	C	D	E	F	G	Comments
Overall Width	Overall Length	Radius	Thickness	Hole Grid Width	Hole Grid Length	Hole Diameter		
BP-545-14B	0.766	0.766	0.035	0.067	0.600	0.6	[7] 0.106	
BP-831-01A	0.787	1.831	0.025	0.038	N/A	N/A	N/A	
BP-600-01G	0.810	1.100	N/A	0.118	N/A	N/A	N/A	
BP-025-01A	0.818	0.866	N/A	0.059	0.649	0.7086	0.090	
BP-025-02A	0.818	0.866	N/A	0.059	0.649	0.7086	0.0905	
BP-820-01L	0.820	1.375	0.065	0.040	0.770	none	0.150	
BP-688-01L	0.824	0.688	0.065	0.039	N/A	N/A	0.160	
BP-178-01B	0.870	1.514	0.156	0.062	1.210	none	0.050/0.166	
BP-178-01B	0.870	1.514	0.156	0.062	0.280	1.21	0.050/0.166	
BP-885-01A	0.885	2.070	N/A	0.040	0.610	1.81	[4] 0.125	
BP-147-01E	0.889	0.949	0.029	0.019	N/A	N/A	N/A	
BP-935-01A	0.935	2.615	0.020	0.060	0.810	none	0.078	
BP-952-01L	0.953	1.575	0.059	0.049	1.362	none	0.1220....	2 HOLES[ 0.020 DIA]
BP-843-01B	0.972	1.843	N/A	0.120	0.650	1.379	0.218/0.404	
BP-052-01A	0.995	2.295	0.065	0.020	N/A	N/A	N/A	
BP-050-01A	0.998	0.995	0.020	0.015	N/A	N/A	N/A	
BP-143-01K	1.000	1.430	0.170	0.050	N/A	N/A	0.156	
BP-016-01K	1.000	1.866	0.169	0.050	0.625	none	0.0799/0.1692	
BP-251-02A	1.000	2.500	0.060	0.040	0.800	1.3	0.018	
BP-184-02K	1.000	2.870	0.160	0.050	0.800	1.6	0.064,0.160	
BP-002	1.017	1.700	0.025	0.040	0.800	0.9	.056	
BP-002-01A	1.017	1.700	0.025	0.040	0.800	0.9	0.056/0.130	
BP-025-01S	1.017	1.700	N/A	0.040	0.646	1.46	0.056/0.130	
BP-144-00E	1.045	1.559	0.150	0.060	0.260	1.259	0.122/0.138	
BP-144-01E	1.045	1.560	0.149	0.060	1.260	none	0.139	
BP-144-02E	1.045	1.560	0.149	0.062	1.260	none	0.139	
BP-181-02B	1.108	2.890	0.170	0.059	0.800	1.6	0.118	
BP-021-02B	1.110	2.090	0.020	0.060	0.800	1.6	0.123	
BP-234-01S	1.160	2.340	0.060	0.060	0.900	2.075	0.125	
BP-030-01A	1.165	3.230	N/A	0.039	0.100	N/A	0.0787	



400 Kuller Road  
 Clifton, NJ 07011  
 Phone: 973.253.0500  
 Fax: 973.253.9611  
 Web: www.coining.com  
 E-mail: sales@coining.com

## BP • Flat or Coined Base Plates

CTI Part#	A	B	C	D	E	F	G	Comments
	Overall Width	Overall Length	Radius	Thickness	Hole Grid Width	Hole Grid Length	Hole Diameter	
BP-530-01S	1.200	1.500	0.086	0.040	N/A	N/A	0.040	
BP-075-02S	1.237	2.227	0.130	0.060	0.945	1.83	0.260	
BP-007-03B	1.340	2.740	N/A	0.065	1.025	2.525	0.137	
BP-200-04B	1.345	1.940	0.080	0.105	1.000	1.6	0.091	
BP-200-06B	1.345	1.940	0.080	0.060	1.000	1.6	.091	
BP-200-03B	1.345	19.400	0.080	0.075	1.000	1.6	0.091/0.024	
BP-378-01CT	1.370	1.496	N/A	0.098	1.193	1.311	0.102	
BP-319-01B	1.450	1.450	0.131	0.025	0.608	0.88	0.1400	
BP-245-01L	1.495	2.450	0.050	0.051	1.250	2.2	0.143	
BP-151-01B	1.495	3.000		0.050	1.260	2.76	0.128	4 HOLES 0.128 DIA
BP-204-1CT	1.496	2.204	N/A	0.037	N/A	N/A	N/A	
BP-319-01B	1.500	1.500	0.131	0.125	0.656	0.88	.140	
BP-300-01B	1.500	3.000	0.029	0.050	1.370	2.87	0.128	4 HOLES
BP-156-01A	1.510	1.933	0.060	0.040	none	none		
BP-211-01A	1.510	2.500	0.060	0.040	N/A	N/A	N/A	
BP-126-01B	1.848	2.882	0.125	0.060	1.500	2.35	0.0760	
BP-362-15T	1.968	3.622	N/A	0.159	1.575	3.23	0.221 / 0.9055	
BP-035-01S	1.969	2.165	N/A	0.049	1.752	1.949	0.098	
BP-601-01A	2.000	3.500	N/A	0.118	N/A	N/A	N/A	
BP-015	2.200	2.700	.000	0.050	1.950	2.4	.136	
BP-015-01B	2.200	2.700	N/A	0.050	1.950	2.4	0.136	
BP-015-02B	2.200	2.700		0.050	1.950	2.25	0.1325	
BP-075-01S	2.478	4.255	0.130	0.060	1.890	3.66	0.260	
BP-311-01A	3.120	3.755	0.240	0.059	2.677	3.25	0.208	