

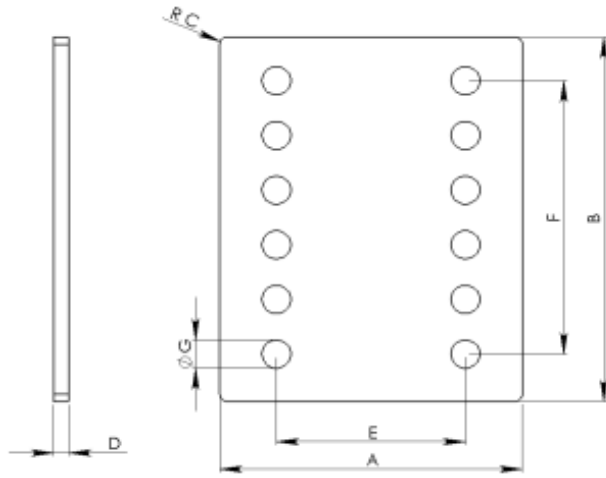


**Coining** Technologies  
INCORPORATED

## Open Tool Catalog

Phone +1.973.253.0500 • Fax +1.973.253.9611 • e-mail [sales@coining.com](mailto:sales@coining.com)  
[www.coining.com](http://www.coining.com)

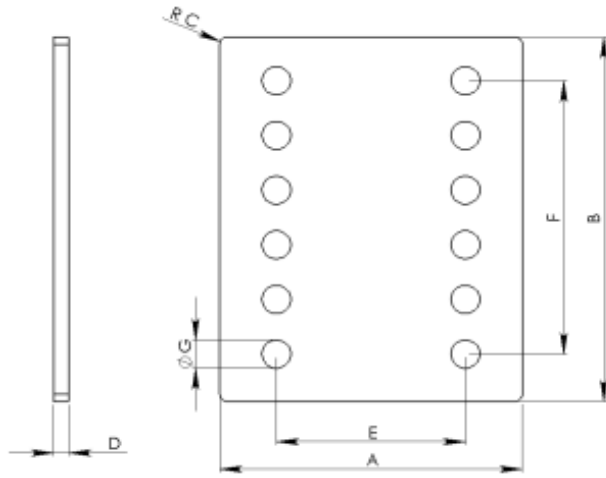
Rev. A-113007



400 Kuller Road  
 Clifton, NJ 07011  
 Phone: 973.253.0500  
 Fax: 973.253.9611  
 Web: www.coining.com  
 E-mail: sales@coining.com

## RB • Coined Relay Bases

	A	B	C	D	E	F	G	H
CTI Part#	Overall Width	Overall Length	Radius	Thickness	Hole Grid Width	Hole Grid Length	Hole Diameter	Moat
RB-550-01B	0.100	0.100	0.175	0.115	0.430	0.43	0.144/0.175	NO
RB-215-10B	0.369	0.773	0.035	0.080	0.200	0.6	0.096	YES
RB-215-01B	0.371	0.771	0.030	0.060	0.150	0.45	0.1	YES
RB-313-02B	0.371	0.771	0.034	0.060	0.200	0.6	0.094	YES
RB-357-01B	0.374	0.774	0.015	0.060	0.200	0.6	0.096	NO
RB-105-01B	0.383	0.783	0.035	0.060	0.200	0.6	.128/.106	YES
RB-250-01A	0.468	1.026	0.038	0.110	0.200	0.6	0.125	YES
RB-007-01B	0.475	0.975	0.015	0.093	ODD	ODD	.100/.161/.191	YES
RB-007-02B	0.475	0.975	0.015	0.080	0.630	0	.150/.180	YES
RB-007-03B	0.475	0.975	0.015	0.093	0.630	0	.150/.180/.085	YES
RB-007-04B	0.475	0.975	0.015	0.093	ODD	ODD	.161/.191	YES
RB-007-07B	0.475	0.975	0.015	0.093	0.200	0.6	0.161	YES
RB-348-01A	0.485	0.900	0.065	0.060	0.260	0.7	0.07	NO
RB-071-01B	0.773	0.773	0.030	0.078	0.450	0.45	0.1	YES
RB-071-02B	0.773	0.773	0.030	0.080	0.400	0.46	0.14	YES
RB-004	0.967	0.967	0.030	0.093	0.600	0.6	0.161	YES
RB-203	0.967	0.967	0.030	0.093	ODD	ODD	.141/.161/.187	YES
RB-008-02B	0.975	0.975	0.015	0.080	0.600	0.63	.150/.180	YES
RB-008-03B	0.975	0.975	0.015	0.080	0.600	0.63	.140/.150/.180	YES
RB-006-01B	0.997	0.997	0.030	0.088	0.600	1	0.161	YES
RB-357-11B	0.142	0.498	0.033	0.070	0.000	0	0.094	NO
RB-550-01B	0.155	0.155	N/A	0.110	N/A	N/A	0.125	NO
RB-326-01B	0.212	0.482	0.015	0.045	0.100	0.3	0.07	NO
RB-205-08B	0.313	1.684	N/A	0.080	0.170	1.225	0.093	NO
RB-205-02B	0.321	1.334	0.321	0.080	0.170	0.875	0.093	NO
RB-205-03B	0.322	0.634	0.321	0.080	0.170	0.175	0.093	NO
RB-202-02B	0.322	0.748	0.322	0.080	0.125	0.625	0.1	YES
RB-202-01B	0.322	0.750	N/A	0.080	1.630	0.536	0.1	NO
RB-205-01B	0.322	0.984	0.322	0.080	0.170	0.525	0.093	NO
RB-301-01B	0.336	0.745	N/A	0.080	1.860	0.486	0.161/0.625	NO



400 Kuller Road  
 Clifton, NJ 07011  
 Phone: 973.253.0500  
 Fax: 973.253.9611  
 Web: www.coining.com  
 E-mail: sales@coining.com

## RB • Coined Relay Bases

	A	B	C	D	E	F	G	H
CTI Part#	Overall Width	Overall Length	Radius	Thickness	Hole Grid Width	Hole Grid Length	Hole Diameter	Moat
RB-215-02B	0.360	0.764	0.040	0.080	0.200	0.6	0.126	YES
RB-313-03B	0.368	0.762	0.043	0.060	0.200	0.6	0.093	YES
RB-215-02B	0.370	0.774	0.033	0.071	0.200	0.6	0.094	YES
RB-357-10B	0.370	0.774	0.033	0.071	0.200	0.6	0.094/0.062	YES
RB-215-01B	0.371	0.771	0.030	0.063	0.150	0.45	0.1	NO
RB-001-01G	0.394	1.614	0.059	0.100	0.000	0	0.236	NO
RB-925-01B	0.441	0.925	0.441	0.078	0.264	0	0.165	NO
RB-101-01G	0.473	0.473	0.015	0.079	0.236	0	0.118	NO
RB-007-05B	0.474	0.977	0.015	0.080	0.200	0.6	0.161	YES
RB-264-01B	0.476	0.967	0.017	0.080	0.200	0.6	0.161	YES
RB-348-01A	0.485	0.900	0.065	0.059	0.260	0.7	0.069	NO
RB-979-01B	0.495	2.093		0.117	0.173	1.063	0.093	NO
RB-009-01B	0.498	1.213	0.062	0.114	0.112	0.432	0.081	NO
RB-010-01B	0.498	1.545	0.062	0.114	0.112	0.756	0.081	NO
RB-111-01B	0.610	2.643	0.062	0.118	0.224	1.739	0.081	NO
RB-778-02B	0.778	0.778	0.015	0.062	0.400	0.46	0.14	NO
RB-203-02B	0.967	0.967	0.030	0.093	0.600	0.63	0.186	YES
RB-004-01B	0.968	0.967	0.030	0.093	0.600	0.6	0.16	YES
RB-004-02B	0.968	0.968	0.030	0.093	0.600	0.63	0.09	YES
RB-008-01B	0.975	0.975	0.019	0.079	0.897	0	0.075	YES
RB-008-04B	0.978	0.978	N/A	0.082	0.600	0.6		NO
RB-008-01B	0.999	1.429	0.030	0.090	1.000	1	0.161	YES
RB-428-01B	1.010	1.270	0.020	0.080	0.600	0.6	0.16	NO
RB-428-02B	1.010	1.270	0.020	0.080	0.600	0.6	0.16	NO
RB-668-01B	1.010	1.270	0.020	0.080	0.600	0.6	0.16	NO
RB-016-01B	1.016	1.442	N/A	0.079	0.800	0	0.075	YES
RB-002-01B	1.030	1.118	0.143	0.090	0.630	0.734	0.161/0.0135	YES
RB-171	1.410	1.410	0.030	0.125	0.450	0.53	.156/.250	NO